

**SEYI**  
**EUROPE**



**SN1** series

**SN1-25~250 TONS**

**CROSS-SHAFT PRECISION PRESSES**



SN1-25~35~45~60~80~110~150~200~250  
SN1-25~35~45~60~80~110~150~200~250  
SN1-25~35~45~60~80~110~150~200~250

**Quality / Productivity / Safety**

**CROSS-SHAFT PRECISION PRESSES**





# Features

- ✔ **High torque, low noise wet clutch and brake.**
- ✔ **Rigid frame with less deflection.**
- ✔ **High accuracy transmission gears and high rigidity crank ensure press long life and accuracy.**
- ✔ **Forced Lubrication system with default monitor ensures operational reliability.**
- ✔ **User-friendly design and all-function electric control system enable the accessories to attach easily.**
- ✔ **High accuracy meets the CNS 1st level.**



## High Precision Transmission Gear

The high accurately machined gear system provides smooth and silent operation.

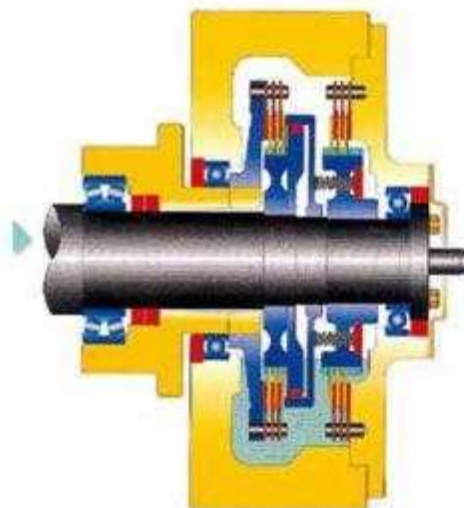


## High Quality Crank Shaft

The strong crank shaft with outstanding rigidity ensures that accuracy can be maintained under qualified standard and extends the life of tooling.

## High Torque Wet Clutch and Brake

- Multiplate, low inertia design for quick response operation.
- High intermittent allowance for robot automatic operation.
- No pollution and low noise correspond to future environmental requirements.





# Features

## Motorized Slide Adjusting Device (SN1-60~250)

The motorized slide adjusting device is adapted with a thin brake motor and operated with push buttons. It provides stable positioning accuracy and quick adjustment.

## Auto Lubrication System

The auto lubrication system with default monitor ensures reliable operation.

## Easy-to-use Slide Adjusting Device (SN1-25~45)

Simple, reliable manual slide adjuster with 0.1mm increment indicator.



## Dual Safety Valve

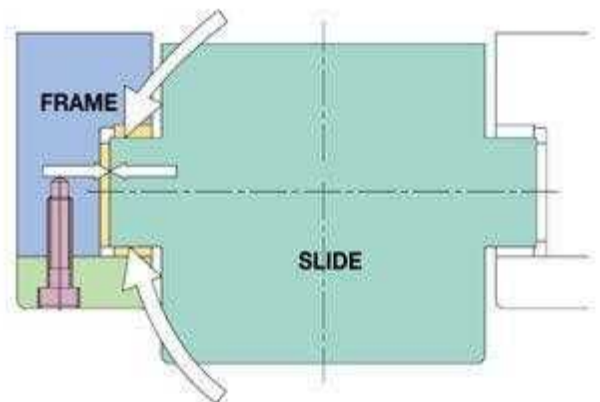
The interlock mechanism on the dual valve keeps the clutch and brake from mis-actuation when valve is in fault.

## Digital Die Height Indicator (SN1-60~250)

Motorized slide adjusting device fitted with 0.1mm increment digital die height indicator.

## Long Hexagonal Gibs

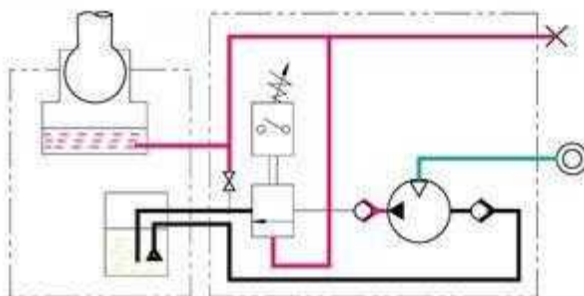
Durable bronze alloy lining fixed directly to frame without the defect of loosening adjusting bolts. Durable lining can also maintain high accuracy and extend the life of tooling.





### Pendent Control Cabinet

User-friendly design for simple and easy operation.

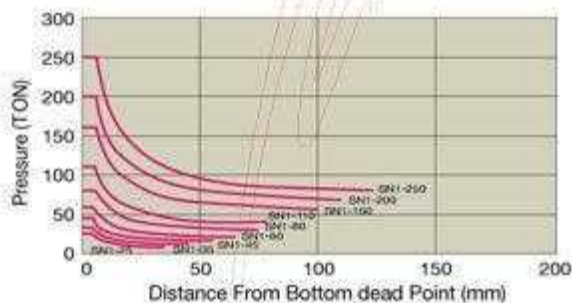


### Hydraulic Overload Protector

The hydraulic overload protector is installed to prevent overloading from exceeding the rated tonnage capacity and protect press and tooling from damage.

The simple resetting process makes restarting operation easy

### Stroke and Pressure Curve



### Rating Point

Model	STROKE(mm)	TONNAGE RATING POINT(mm)
SN1-25	80	3.2
SN1-35	90	3.2
SN1-45	110	3.2
SN1-60	130	4
SN1-80	150	5
SN1-110	180	5
SN1-160	200	6
SN1-200	220	6
SN1-250	250	6

### General Attachments

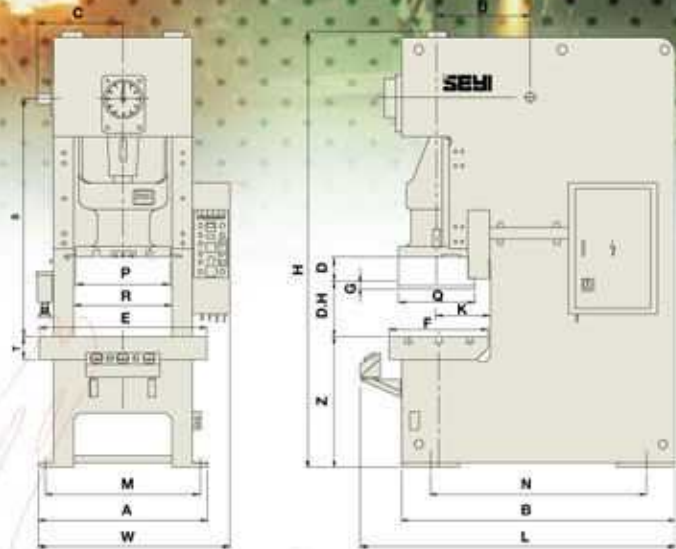
1. Hydraulic Overload Protector
2. Manual Slide Adjusting Device (SN1-25-45)
3. Electrical Slide Adjusting Device (SN1-60-250)
4. Die Height Indicator (SN1-60-250)
5. Slide Counter Balance
6. Rotary Cam Limit Switch
7. Antirepeat Safety Device
8. Magnetic Strokes Counter
9. Miss Feed Detector Socket
10. Pneumatic Ejector
11. Air Outlet Socket
12. Maintenance Tools

### Optional Attachments

1. Power Take-off Shaft
2. Pneumatic Die Cushion
3. Photoelectric Safety Device
4. Variable Speed Motor
5. Quick Die Change Device (Q.D.C.)
6. Preset Counter
7. Knockout Device
8. Foot Switch
9. Rubber Mount



# Specification



## Specifications and dimensions SN1-160,200,250 are without shank holder

Model	SN1-25			SN1-35			SN1-45			SN1-60			SN1-80			SN1-110			SN1-160			SN1-200			SN1-250						
	S	H	P	S	H	P	S	H	P	S	H	P	S	H	P	S	H	P	S	H	P	S	H	P	S	H	P				
Capacity	tf			25			35			45			60			80			110			160			200			250			
Length of stroke	(D)m.m			80 50 35			90 60 40			110 70 45			130 80 50			150 100 60			180 110 70			200 130 80			220 150 90			250 180 100			
Stroke per minute	Fixed speed	S.P.M.			90 110 140			80 100 130			70 90 120			60 80 100			50 70 90			40 60 80			35 50 65			30 45 55					
		Variable speed	S.P.M.			70 80 80			60 70 80			50 60 80			40 55 70			30 45 60			25 30 40			22 30 30							
			S.P.M.			110 140 180			95 130 170			85 120 160			75 110 150			65 100 140			55 90 125			50 70 100			45 60 85			40 50 70	
Tonnage rating point	(B.D.C)mm			3.2 2.3 3.2			2.3 3.2 2.3			3.2 2.3 4			2.3 5 3.2			5 3.2 5			3.2 6 4			6 4 6			4 6 4			6 4 4			
Die height	(D.H)m.m			230 200 200			250 220 220			270 240 240			300 270 270			330 300 300			350 320 320			400 360 360			450 400 400			450 400 400			
Adjustment of slide	(G)m.m			50			50			60			70			80			90			100			110			120			
Area of slide	(PxQ)m.m			330x250			380x300			430x350			480x400			560x460			650x520			720x580			860x650			960x720			
Diameter of shank hole	m.m			ø38.1			ø50.8			ø50.8			ø50.8			ø50.8			ø50.8			ø65			ø65			ø65			
Area of bolster	(ExF)m.m			700x320			780x400			840x440			900x520			1050x600			1150x680			1250x760			1400x840			1500x900			
Thickness of bolster	(T)m.m			85			100			115			130			140			155			165			180			180			
Height of bolster	(Z)m.m			800			800			800			900			900			900			900			1000			1000			
Inside measurement frame	(R)m.m			394			490			516			544			610			670			730			900			970			
Main motor	Fixed speed	HPxP			5x4			5x4			5x4			7 1/2x4			10x4			10x4			15x4			20x4			25x4		
		Variable speed	HPxP			5x4			5x4			7 1/2x4			10x4			10x4			15x4			20x4			25x4			30x4	
Motor for slide adjustment	HPxP			-			-			-			0.5x4			0.5x4			0.5x4			1x4			1x4			1x4			
Foot size	(AxB)m.m			720x1058			830x1125			890x1210			940x1315			1050x1480			1160x1680			1300x1985			1480x2113			1560x2400			
Position of anchor bolts	(MxN)m.m			620x860			730x925			790x1010			840x1115			950x1230			1060x1380			1180x1655			1360x1755			1440x2000			
Floor space required	(WxLxH)m.m			803x1280x 2060			1000x1410x 2180			1053x1490x 2340			1100x1600x 2540			1212x1820x 2750			1325x2020x 2985			1448x2325x 3315			1625x2455x 3715			1705x2790x 3963			
Accuracy	CNS 1st			CNS 1st			CNS 1st			CNS 1st			CNS 1st			CNS 1st			CNS 1st			CNS 1st			CNS 1st			CNS 1st			

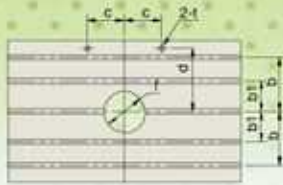
\*Materials and specifications are subject to change without notice.

## Die Cushion (Option)

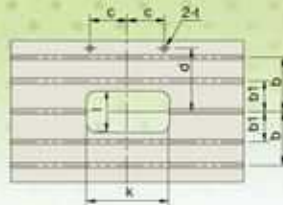
Capacity	tf	2.2	2.2	3.5	3.5	6	8	10	14	14
Length of stroke	m.m	50	50	70	70	80	90	100	110	120
Area of pad	m.m	300x210	300x210	340x234	340x234	410x260	480x300	540x340	640x440	740x540

\*Operation noise below 76db

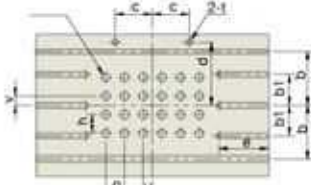
\*Materials and specifications are subject to change without notice.



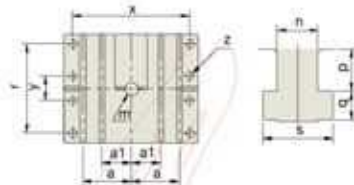
SURFACE OF BOLSTER  
(STANDARD)



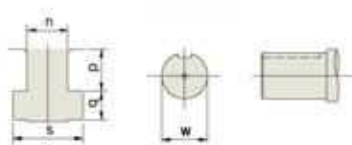
SURFACE OF BOLSTER  
(WITH RECTANGULAR HOLE)



SURFACE OF BOLSTER  
(WITH DIE CAUSHION)



SURFACE OF RAM



SIZE OF T-SLOT



## Dimensions of bolster plate and ram

(The cushion pin holes of SN1-25,35,45,60,200 are center located on bolster)

Model	SN1-25	SN1-35	SN1-45	SN1-60	SN1-80	SN1-110	SN1-160	SN1-200	SN1-250
<b>a</b>	105	130	140	150	160	180	260	300	350
<b>a1</b>	-	-	-	-	-	-	160	170	200
<b>b</b>	100	125	140	150	180	210	290	320	350
<b>b1</b>	-	-	-	-	-	-	165	180	200
<b>c</b>	130	130	150	150	150	150	200	200	250
<b>d</b>	135	170	185	200	250	300	340	380	410
<b>e</b>	-	210	220	240	270	280	290	320	320
<b>f</b>	ø100	ø110	ø130	ø150	ø180	ø200	ø220	ø250	ø270
<b>g</b>	65	65	75	75	75	90	100	100	100
<b>h</b>	60	90	100	100	75	90	100	100	100
<b>i (R.Lx F.B)</b>	5x3	5x3	5x3	5x3	6x4	6x4	6x4	7x5	8x6
<b>j</b>	ø26	ø26	ø26	ø26	ø26	ø32	ø32	ø32	ø32
<b>k</b>	200	220	260	300	360	400	440	500	540
<b>l</b>	100	110	130	150	180	200	220	250	270
<b>m</b>	ø38.1	ø50.8	ø50.8	ø50.8	ø50.8	ø50.8	ø65	ø65	ø65
<b>n</b>	22	22	22	22	28	28	28	28	28
<b>p</b>	23	23	23	23	30	30	30	30	30
<b>q</b>	16	16	16	16	20	20	20	20	20
<b>r</b>	-	-	-	-	-	-	480	550	620
<b>s</b>	38	38	38	38	48	48	48	48	48
<b>t</b>	ø22	ø26	ø26	ø30	ø30	ø30	ø30	ø30	ø30
<b>u</b>	0	0	0	0	37.5	45	50	0	50
<b>w</b>	ø35 <sup>-0</sup> <sub>-0.03</sub>	ø35 <sup>-0</sup> <sub>-0.03</sub>	ø40 <sup>-0</sup> <sub>-0.03</sub>	ø40 <sup>-0</sup> <sub>-0.03</sub>	ø40 <sup>-0</sup> <sub>-0.03</sub>	ø70 <sup>-0</sup> <sub>-0.03</sub>	ø70 <sup>-0</sup> <sub>-0.03</sub>	ø70 <sup>-0</sup> <sub>-0.03</sub>	ø70 <sup>-0</sup> <sub>-0.03</sub>
<b>x</b>	290	340	370	400	480	560	630	750	850
<b>y</b>	70	70	80	90	90	100	130	140	160
<b>z</b>	4-ø18	4-ø18	4-ø18	4-ø18	4-ø18	4-ø23	8-ø23	8-ø23	8-ø23

PS. : The T-Slot on slide only for SN1-160 above.

\*Materials and specifications are subject to change without notice.



- ✓ **Match with SEYI automation line, SEYI press provides the most reliable and accurate equipment.**
- ✓ **High productivity press for automating multi-process with large batch small quantity.**
- ✓ **Multi-station safety sensor perfectly protects the tooling and reduces manual failure.**
- ✓ **Multi-feeding system design for customer's great convenience.**



# SEYI

**SHIEH YIH MACHINERY INDUSTRY CO., LTD.**

NO.446, Nan Shang Rd., Kueisan Hsiang,

Taoyuan, Taiwan

TEL:886-3-352-5466

FAX:886-3-352-5488

**XIE YI TECH MACHINERY(CHINA) CO., LTD.**

**CHINA FACTORY** TEL:86-512-5740-7900 FAX:86-512-5740-7899

<http://www.seyi.com.cn>

**DONGGUAN BRANCH** TEL:86-769-8502-8531 FAX:86-769-8502-8530