

SEYI
EUROPE



STRAIGHT SIDE SINGLE CRANK PRESSES

SNS1 • SLS1 series

SNS1-80~300 tons • SLS1-80~300 tons

<http://www.seyi.com.tw>



SNS1 series

STRAIGHT SIDE SINGLE CRANK PRESSES

- >>> Straight side frame designed virtually eliminates angular deflection, providing increased precision for progressive die applications and reducing maintenance costs on tooling.
- >>> Zero angle deflection of frame and cost effective in tooling maintenance work.
- >>> Duly designed with the gibs centrally mounted in line with the slide with stand longer stroke length that ensure a stable and precise tooling life span.
- >>> The slide area is 15%~25% greater than comparable C-frame presses to allow for larger tools. The large 6-point gibs are centered in the slide body, to provide better resistance to off-center loads.
- >>> SEYI patented high-torque wet clutch and brake system provides low noise, long life operation with minimal maintenance.
- >>> User friendly, multi-function control system allows for easy integration of auxiliary equipment and automation.
- >>> Designed to allow simple integration with automated auxiliary equipments.

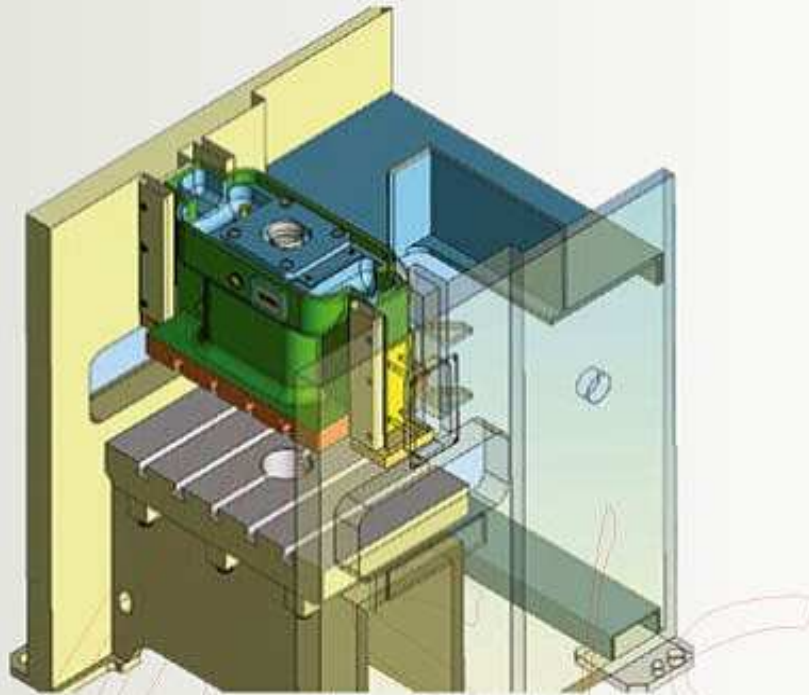
SLS1 *series*

STRAIGHT SIDE SINGLE CRANK PRESSES

- >>> Unitized straight side frame suitable for precise progressive tooling job.
- >>> Zero angle deflection of frame and cost effective in tooling maintenance work.
- >>> High rigidity structure ensures consistent dynamic precision.
- >>> Greater slide area in comparison to the C type presses that can accommodate larger tooling to work more efficiently.
- >>> User friendly safety operation with multi-functional control system application.
- >>> So easy to operate and applicable to integrate with various type of press ancillary equipment.

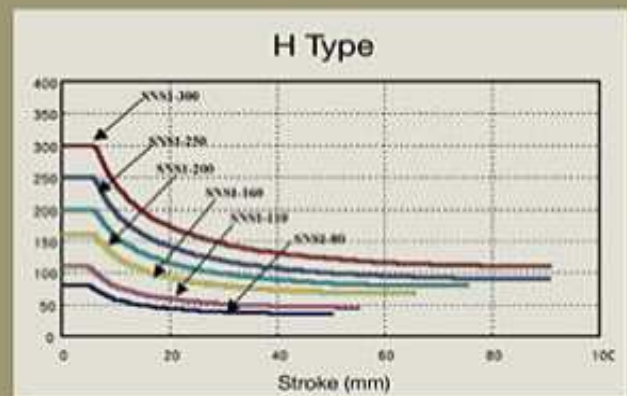
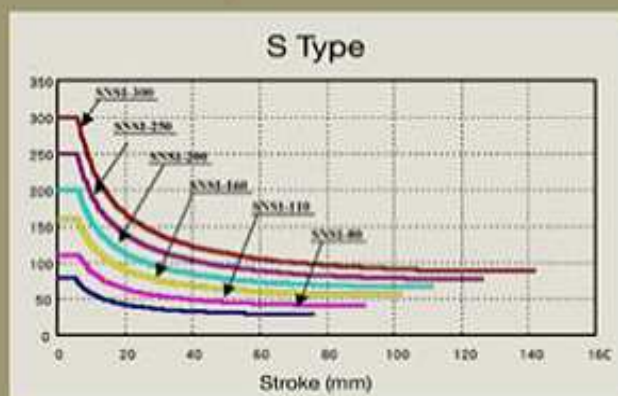


Endurance of bias loading in the center of slider guide

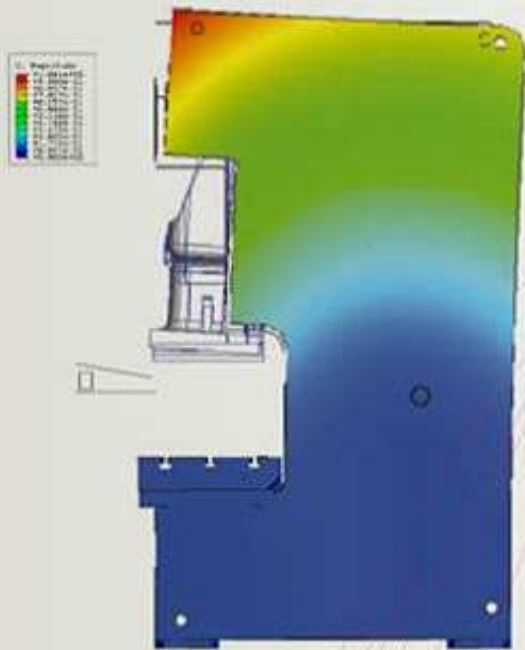


The guide in front and rear side is larger, the intensity promotes to double of C type. Highly-precise guide could maintain dynamic precision, which is located at the center line of the slide and especially suitable for highly-precise pressing application.

SNS1 Stroke & Pressure Curve



High Rigidity Structure



C Type

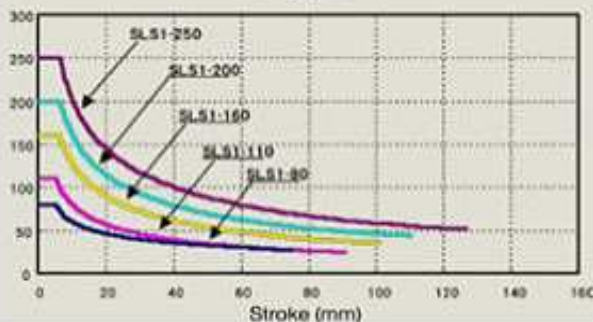


Straight Side Press

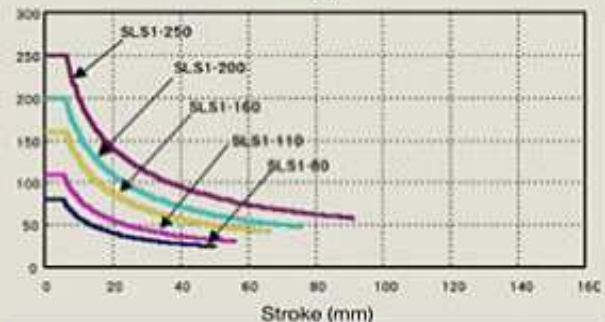
1. Rigid frame designed, without further tilting inclination comparing to conventional C frame presses.
2. Main frame rigidity structure is higher than C type, eliminates noise and pollution caused by pressing operations, and is suitable for continuous mode of operation.

SLS1 Stroke & Pressure Curve

S Type

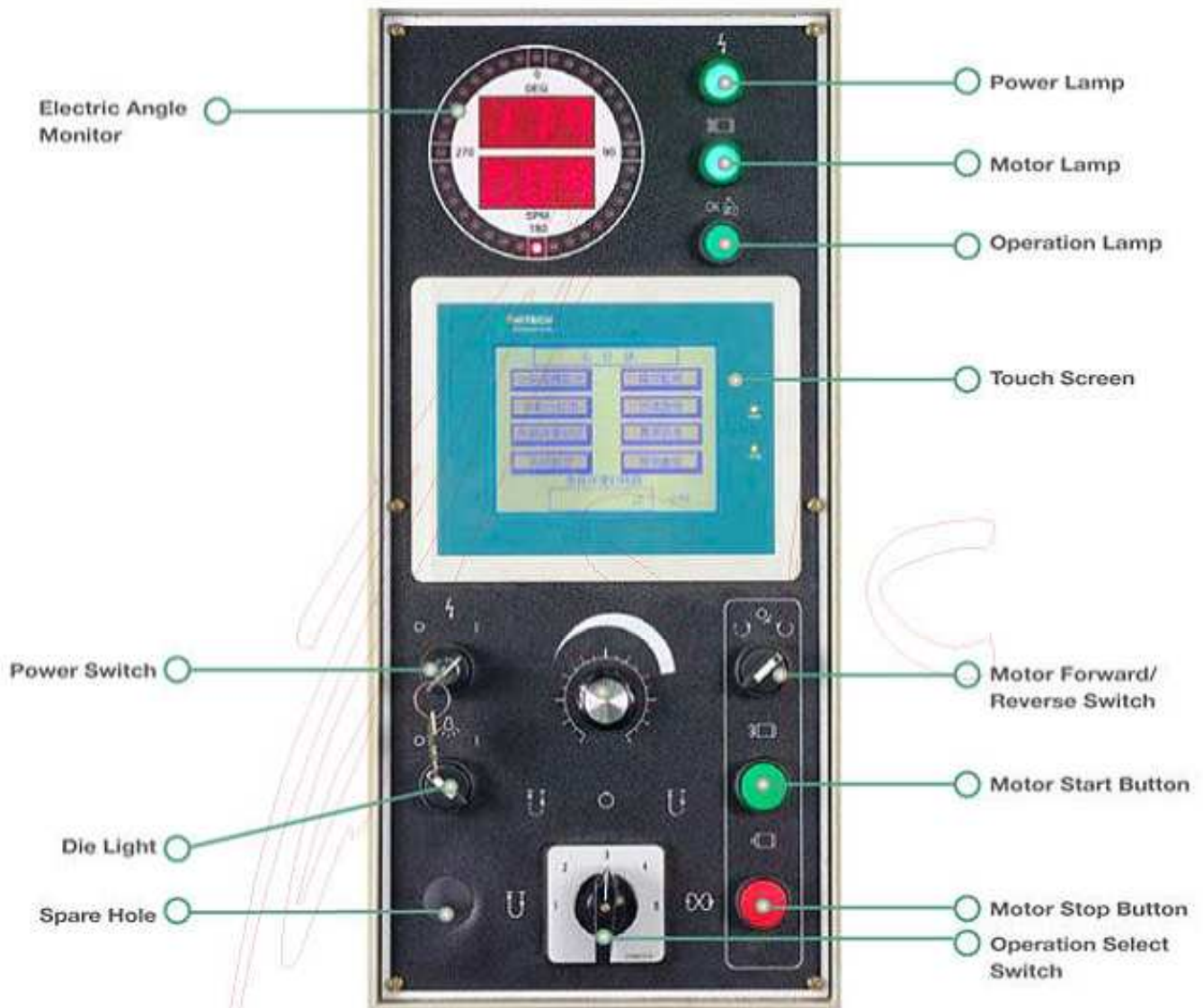


H Type





PPC-9000

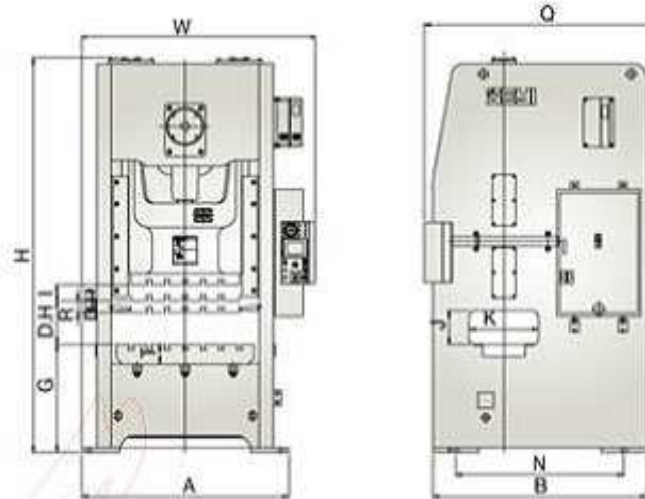


User-Friendly

- >>> With touchscreen, panel monitor, easy access operation.
- >>> Monitor display abnormal condition, easy detection.
- >>> Easy access functional operation, applicable for functional upgrade as duly designed on the interface.
- >>> Auto-tune function, more precise.
- >>> Human-machine-interface touchscreen, able to select functional application as per customer needs.



SNS1 Layout Drawing



SNS1 Specifications

		SNS1-80		SNS1-110		SNS1-160		SNS1-200		SNS1-250		SNS1-300	
		S	H	S	H	S	H	S	H	S	H	S	H
Capacity	tf	80		110		160		200		250		300	
Length of stroke	(f)mm	150	100	180	110	200	130	220	150	250	180	280	180
Stroke per minute	SPM	40-75	55-125	35-65	50-110	30-55	40-95	25-45	35-80	22-40	30-60	20-35	25-50
Tonnage rating point	mm	5		5		6		6		6		6	
Die height	(D,H)mm	330	300	350	320	400	360	450	400	450	400	500	400
Adjustment of slide	(R)mm	80		90		100		110		120		120	
Area of slide	(LxR)mm	700x460		800x520		900x580		1000x650		1100x720		1150x800	
Diameter of Shank Hole	mm	ø50.8		ø50.8		ø65		ø65		ø65		ø65	
Area of bolster	(LxR)mm	900x680	900x460	1000x680	1000x520	1150x760	1150x600	1250x840	1250x680	1350x900	1350x750	1400x1050	1400x850
Thickness of bolster	(T)mm	140		155		165		180		180		200	
Height of bolster	(G)mm	900		900		940	900	1020	1000	1020	1000	1040	1020
Main motor (Fixed speed)	HP x P	10x4		15x4		20x4		25x4		30x4		40x4	
Motor for slide adjustment	HP x P	0.5x4		0.5x4		1x4		1x4		1x4		2x4	
Window opening	(KxJ)mm	440x280	370x250	500x300	420x270	560x350	470x310	620x400	520x350	680x400	570x350	760x450	680x350
Foot Size	(AxB)mm	1430x1470	1430x1420	1560x1600	1560x1550	1720x1780	1720x1730	1870x1960	1870x1930	1990x2150	1990x2100	2070x2296	2070x2246
Floor space required	(WxQ)mm	1550x1740	1550x1690	1700x1870	1700x1820	1820x2030	1820x1980	1970x2200	1970x2150	2090x2370	2090x2320	2160x2626	2160x2576
Overall height	(H)mm	2765		2995		3320	3280	3745	3725	4025	4005	4200	4020
Balancer Capacity	kgf	300		350		500		800		1000		1000	
Air Pressure	Kgf/cm	5		5		5		5		5		5	

Die Cushion (Option)

Capacity	Tons	6	—	6	—	8	—	10	—	10	—	14	—
Length of stroke	mm	95	—	95	—	110	—	130	—	130	—	140	—
Area of pad	(LxR)mm	480x340	—	480x340	—	560x370	—	700x450	—	700x450	—	700x450	—

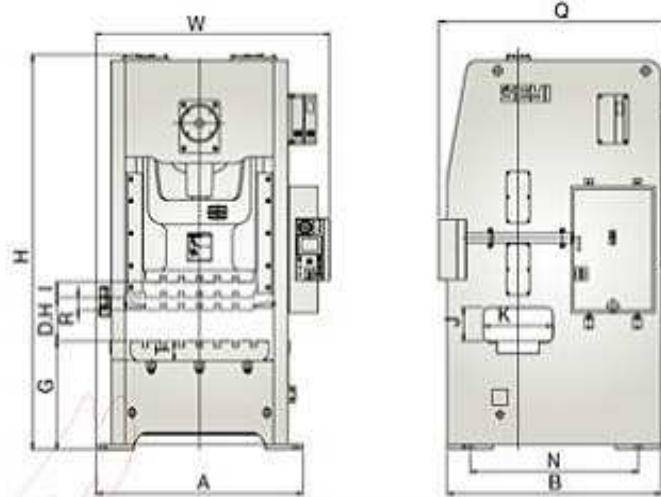
Standard Attachments

1. Fix speed motor + Inverter
2. Combination wet clutch / brake
3. Hydraulic overload protection system
4. PPC 9000 control system
 - Digital monitor with crank angle and SPM
 - Touch panel display with press running / error message
5. Electrical die height adjusting device
6. Automatic grease lubrication system
7. Counter balances of slide
8. Die height indicator (scale unit : 0.1mm)
9. Programmable limit switch
10. Portable operation stand
11. Antirepeat safety device
12. Forth-Reverse switch
13. Total counter 1 set
14. Batch counter 1 set
15. Pre-set counter 1 set
16. Automatic counter 1 set
17. Maintenance counter 1 set
18. Misfeed socket 4 sets (2A,2B)
19. Pneumatic ejector 1 set
20. Air outlet 1 set
21. Tool box

Optional Attachments

1. Pneumatic die cushion
2. Safety light curtains
3. Quick die change system
4. Anti vibration mounts
5. Electric tonnage monitor
6. Safty die block
7. Die light device
8. 110V outlet (1A)

SNS1 Layout Drawing



SLS1 Specifications

		SLS1-80		SLS1-110		SLS1-160		SLS1-200		SLS1-250		SLS1-300	
		S	H	S	H	S	H	S	H	S	H	S	H
Capacity	tf	80		110		160		200		250		300	
Length of stroke	(l)mm	150	100	180	110	200	130	220	150	250	180	280	180
Stroke per minute	S.P.M.	40-75	55-100	35-65	50-110	30-55	40-85	25-45	35-70	22-40	30-60	20-35	25-50
Tonnage rating point	mm	5		5		6		6		6		6	
Die height	(D.H)mm	330	300	350	320	400	360	450	400	450	400	500	400
Adjustment of slide	(R)mm	80		90		100		110		120		120	
Area of slide	(LRxFR)mm	700x460		800x520		900x580		1000x650		1100x720		1150x800	
Diameter of Shank Hole	mm	ø50.8		ø50.8		ø65		ø65		ø65		ø65	
Area of bolster	(LRxFR)mm	900x680	900x460	1000x680	1000x520	1150x780	1150x600	1250x840	1250x680	1350x900	1350x750	1400x1050	1400x850
Thickness of bolster	(T)mm	140		155		165		180		180		200	
Height of bolster	(G)mm	900		900		940	900	1020	1000	1020	1000	1040	1020
Main motor (Fixed speed)	HP x P	10x4		15x4		20x4		25x4		30x4		40x4	
Motor for slide adjustment	HP x P	0.5x4		0.5x4		1x4		1x4		1x4		2x4	
Window opening	(KxJ)mm	440x280	370x250	500x300	420x270	560x350	470x310	620x400	520x350	680x400	570x350	760x450	650x350
Foot size	(AxB)mm	1430x1470	1430x1420	1560x1800	1560x1550	1720x1780	1720x1730	1870x1980	1870x1930	1990x2150	1990x2100	2070x2295	2070x2246
Floor space required	(WxQ)mm	1550x1740	1550x1690	1700x1870	1700x1820	1820x2030	1820x1980	1970x2200	1970x2150	2090x2370	2090x2320	2160x2626	2160x2576
Overall height	(H)mm	2765		2995		3320	3280	3754	3725	4025	4005	4200	4020
Balancer Capacity	kgf	300		350		500		800		1000		1000	
Air Pressure	Kgf/cm	5		5		5		5		5		5	

Die Cushion (Option)

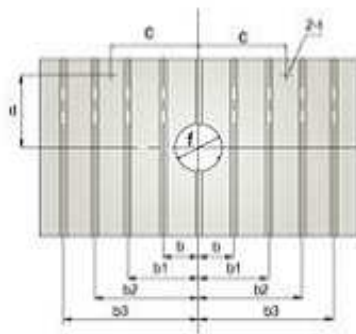
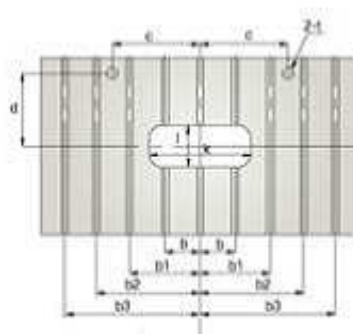
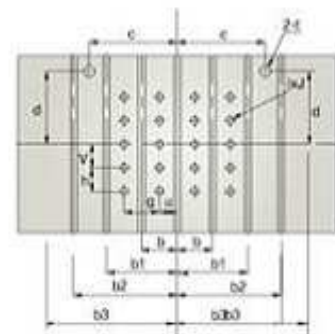
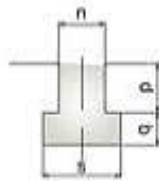
Capacity	Tons	6	—	6	—	8	—	10	—	10	—	14	—
Length of stroke	mm	95	—	95	—	110	—	130	—	130	—	140	—
Area of pad	(LRxFR)mm	480x340	—	480x340	—	560x370	—	700x450	—	700x450	—	700x450	—

Standard Attachments

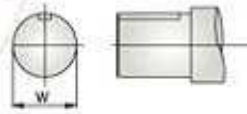
1. Fix speed motor + Inverter
2. Combination wet clutch / brake
3. Hydraulic overload protection system
4. PPC 9000 control system
 - Digital monitor with crank angle and SPM
 - Touch panel display with press running / error message
5. Electrical die height adjusting device
6. Automatic grease lubrication system
7. Counter balances of slide
8. Die height indicator (scale unit : 0.1mm)
9. Programmable limit switch
10. Portable operation stand
11. Antirepeat safety device
12. Forth-Reverse switch
13. Total counter 1 set
14. Batch counter 1 set
15. Pre-set counter 1 set
16. Automatic counter 1 set
17. Maintenance counter 1 set
18. Misfeed socket 4 sets (2A,2B)
19. Pneumatic ejector 1 set
20. Air outlet 1 set
21. Tool box

Optional Attachments

1. Pneumatic die cushion
2. Safety light curtains
3. Quick die change system
4. Anti vibration mounts
5. Electric tonnage monitor
6. Safty die block
7. Die light device
8. 110V outlet (1A)

Surface of bolster-
Round type(Standard)Surface of bolster-
Rectangular typeSurface of bolster-
Die cushion

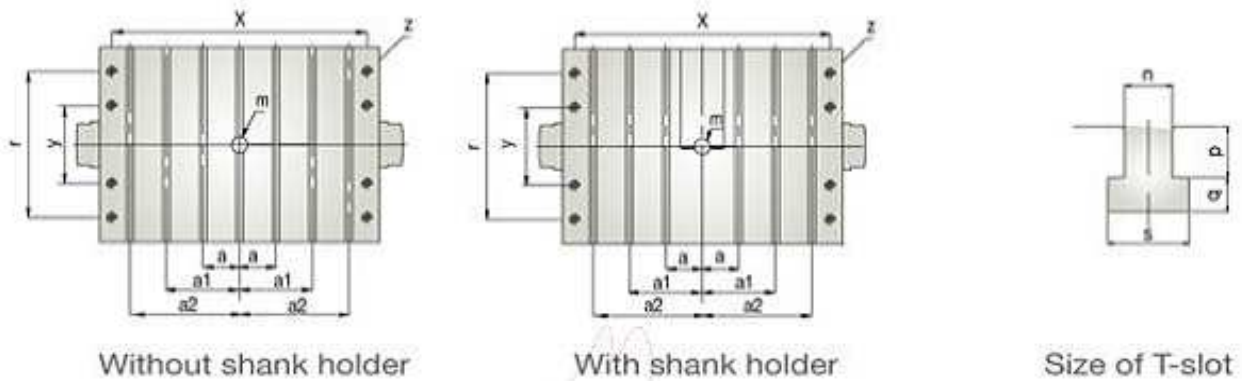
Size of T-slot



Surface of take-off shaft (Option)

	SNS1-80		SNS1-110		SNS1-160		SNS1-200		SNS1-250		SNS1-300	
	SLS1-80		SLS1-110		SLS1-160		SLS1-200		SLS1-250		SLS1-300	
	S	H	S	H	S	H	S	H	S	H	S	H
b	150		150		150		150		150		150	
b1	300		300		300		300		300		300	
b2	—		—		450		450		450		450	
b3	—		—		—		—		—		600	
c	200		200		200		200		250		250	
f	Ø180		Ø200		Ø220		Ø250		Ø270		Ø270	
d	315	180	315	180	340	260	380	300	410	335	410	335
g	140		140		150		150		150		150	
h	90		90		100		100		100		100	
l (R.LxF.B)	4x4		4x4		4x4		4x5		4x5		4x5	
j	32		32		32		32		32		32	
k	360		400		440		500		540		540	
l	180		200		220		250		270		270	
n	28		28		28		28		28		28	
p	30		30		30		30		30		30	
q	20		20		20		20		20		20	
s	48		48		48		48		48		48	
t	Ø30		Ø30		Ø30		Ø30		Ø30		Ø30	
u	75		75		75		75		75		75	
v	45		45		50		100		100		100	
w	40 h7		70 h7		70 h7		70 h7		70 h7		70 h7	

* Materials and specifications are subject to change without notice.



Area of bolster (SNS1/SLS1-80,110 With shank holder,
160~300 Without shank holder)

	SNS1-80		SNS1-110		SNS1-160		SNS1-200		SNS1-250		SNS1-300	
	SLS1-80		SLS1-110		SLS1-160		SLS1-200		SLS1-250		SLS1-300	
	S	H	S	H	S	H	S	H	S	H	S	H
a	150		150		150		150		150		150	
a1	240		300		300		300		300		300	
a2	—		—		—		—		440		450	
m	ø50.8		ø50.8		ø65		ø65		ø65		ø65	
n	28		28		28		28		28		28	
p	30		30		30		30		30		30	
q	20		20		20		20		20		20	
s	48		48		48		48		48		48	
x	600		700		800		900		1000		1050	
r	360		420		480		550		600		600	
y	240		260		280		320		320		320	
z	8-Ø18		8-Ø23		8-Ø23		8-Ø23		8-Ø23		8-Ø23	

※ Materials and specifications are subject to change without notice.

Top Development ■ Eternal Service



China Factory



Hongkong



Los Angeles



Tennessee



SHIEH YIH MACHINERY INDUSTRY CO., LTD.

NO.446, Nan Shang Rd., Kueisan Hsiang,

Taoyuan, Taiwan

TEL:886-3-352-5486

FAX:886-3-352-5488

<http://www.seyi.com.tw>

XIE YI TECH MACHINERY(CHINA) CO., LTD.

CHINA FACTORY TEL:86-512-5740-7900 FAX:86-512-5740-7899
<http://www.seyi.com.cn>

DONGGUAN BRANCH TEL:86-769-8502-8531 FAX:86-769-8502-8530
<http://www.seyi.com.cn>

SEYI-AMERICA, INC.

USA SUBSIDIARY TEL:1-909-839-1151 FAX:1-909-839-1150
<http://www.seyiamerica.com>

TENNESSEE BRANCH TEL:1-931-455-7700 FAX:1-931-455-6092
<http://www.seyiamerica.com>