

SEYI
EUROPE



SN2 series

SN2-110~300 TONS

DOUBLE CRANK PRESSES



SN2-110-160-200-250-300-110-160-200
SN2-110-160-200-250-300-110-160-200
SN2-110-160-200-250-300-110-160-200

Quality / Productivity / Safety

Features

- ✓ *High torque, low noise wet clutch and brake.*
- ✓ *Rigid frame with less deflection.*
- ✓ *High accuracy transmission gears and high rigidity crank ensure press long life and accuracy.*
- ✓ *User-friendly design and all-function electric control system provide high automation compatibility.*
- ✓ *Many protective devices ensure safe operation.*



High Precision Transmission Gear

The high accurately machined gear system provides smooth and silent operation.



High Quality Crank Shaft

The strong crank shaft with outstanding rigidity ensures that accuracy can be maintained under qualified standard and extends the life of tooling.

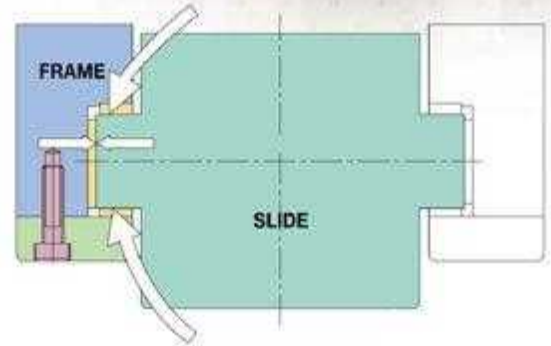
High Torque Wet Clutch and Brake

- Multiplate, low inertia design for quick response operation.
- High intermittent allowance for robot automatic operation.
- No pollution and low noise correspond to future environmental requirements.

FEATURES

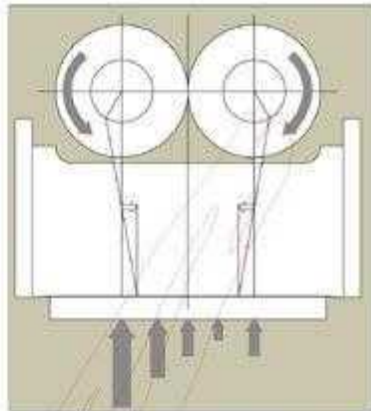
Long Hexagonal Gibs

Long right angle six faced guides without adjustment inaccuracy.



Eliminated Side Thrust

Opposed rotation design to minimize the side thrust force.



Auto Lubrication System

The auto lubrication system with default monitor ensures reliable operation.



Motorized Slide Adjusting Device

The motorized slide adjusting device is adopted with a thin brake motor and operated with push buttons. It provides stable positioning accuracy and quick adjustment.



Dual Safety Valve

The interlock mechanism on the dual valve keeps the clutch and brake from mis-actuation when valve is in fault.



Digital Die Height Indicator

Motorized slide adjusting device fitted with 0.1mm increment digital die height indicator.



Quick Die Change Device (Option)

The die lifter, die clamp and auxiliary rails allow easy die changing in a short time.



Pendent Control Cabinet

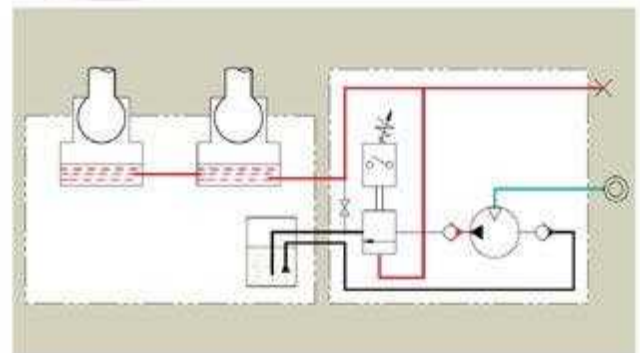
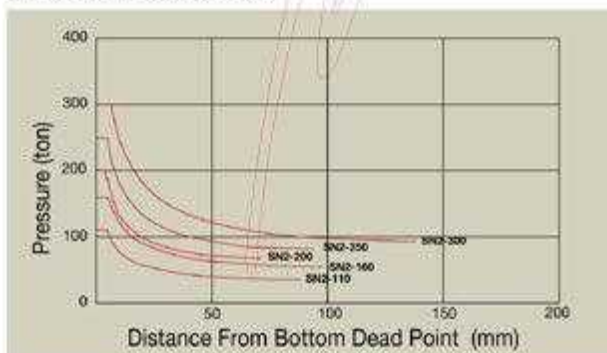
User-friendly design for simple and easy operation.



Hydraulic Overload Protector

The hydraulic overload protector is installed to prevent overloading from exceeding the rated tonnage capacity and protect press and tooling from damage. The simple resetting process makes restarting operation easy.

Stroke and Pressure Curve



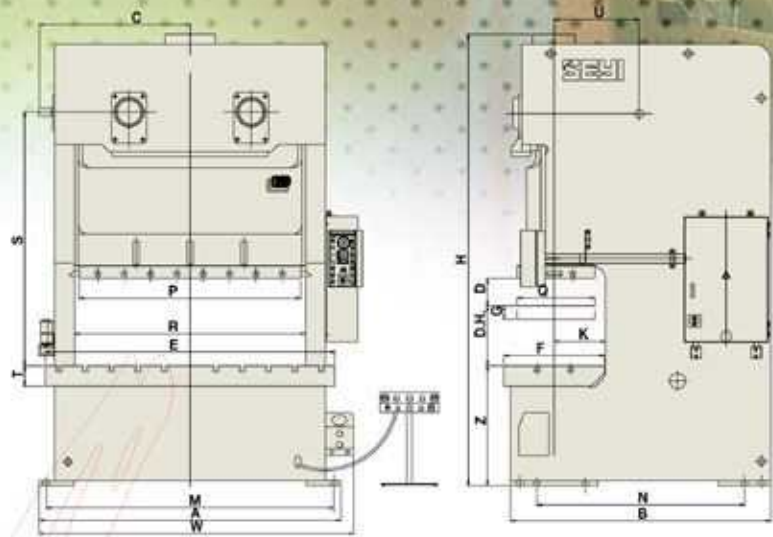
General Attachments

1. Hydraulic Overload Protector
2. Electrical Slide Adjusting Device
3. Die Height Indicator
4. Slide Counter Balance
5. Rotary Cam Limit Switch
6. Antirepeat Safety Device
7. Magnetic Storke Counter
8. Miss Feed Detector Socket
9. Pneumatic Ejector
10. Air Outlet
11. Maintenance Tools

Optional Attachments

1. Power Take-off Shaft
2. Pneumatic Die Cushion
3. Photoelectric Safety Device
4. Variable Speed Motor
5. Quick Die Change Device (Q.D.C.)
6. Preset Counter
7. Knockout Device
8. Foot Switch
9. Rubber Mount

SPECIFICATION



Specifications and dimensions

Model	SN2-110		SN2-160		SN2-200		SN2-250		SN2-300		
	S	H	S	H	S	H	S	H	S	H	
Capacity	110		160		200		250		300		
Length of Stroke (D) m.m.	180	110	200	130	230	150	250	180	280	180	
Stroke per Minute	Fixed speed	50	70	40	60	35	50	30	45	45	
	Variable speed	35-65	45-90	30-50	35-70	25-45	30-60	22-40	30-50	20-35	30-50
Tonnage Rating Point (B.D.C.) m.m.	5		6		7		7		7		
Die Height (DH) m.m.	400	350	450	400	500	450	550	450	550	450	
Adjustment of Slide (G) m.m.	90		100		110		120		120		
Area of Slide (PxQ) m.m.	1430x520		1560x580		1850x650		2100x700		2100x800		
Diameter of Shank Hole m.m.	ø51		ø51		ø51		ø51		ø51		
Area of Bolster (ExF) m.m.	1880x680		2040x760		2420x840		2700x920		2700x940		
Thickness of Bolster (T) m.m.	150		160		170		180		200		
Height of Bolster (Z) m.m.	900		950		1000		1100		1100		
Inside Measurement of Frame (R) m.m.	1470		1590		1930		2190		2180		
Frame Gap (K) m.m.	350		390		430		470		480		
Position of P.T.O. Shaft (CxSxU) m.m.	997x1685x615	997x1600x615	1077x1855x660	1077x1700x660	1252x2107x710	1252x2017x710	1397x2306x770	1397x2170x770	1412x2460x800	1412x3100x800	
Main Motor	Fixed speed	10HPx4P		15HPx4P		20HPx4P		25HPx6P		30HPx4P	
	Variable speed	15HPx4P		20HPx4P		25 HPx4P		30HPx4P		40HPx4P	
Motor of Slide Adjustment	1HPx4P		2HPx4P		2HPx4P		2HPx4P		2HPx4P		
Foot Size (AxB) m.m.	1960x1760		2170x2030		2520x2165		2810x2470		2840x2535		
Position of Anchor Bolts (MxN) m.m.	1880x1410	1860x1355	2050x1590	2050x1530	2400x1725	2400x1675	2690x1970	2690x1895	2720x2035	2720x1935	
Floor Space Required (WxB) m.m.	2090x1760	2090x1705	2275x2030	2275x1970	2650x2165	2650x2115	2915x2470	2915x2395	2945x2570	2945x2470	
Overall Height (H) m.m.	3098	3013	3378	3293	3770	3680	4138	4003	4368	4218	
Accuracy	CNS Ist		CNS Ist		CNS Ist		CNS Ist		CNS Ist		

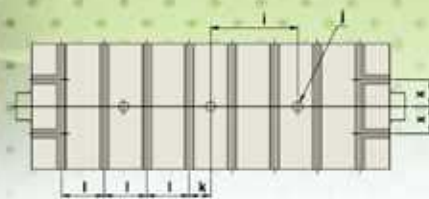
※ Materials and specifications are subject to change without notice.

Die Cushion (Optional)

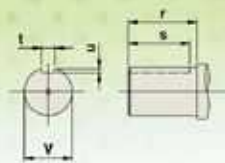
Capacity (at 5 kgf/cm ²)	tf	6 x 2	8 x 2	10 x 2	14 x 2	14 x 2
Length of Stroke	m.m.	95	110	130	140	140
Area of Pads (R.L.x F.B.)	m.m.	480x340x2	560x370x2	700x450x2	700x450x2	700x450x2

※ Operation noise below 76 db.

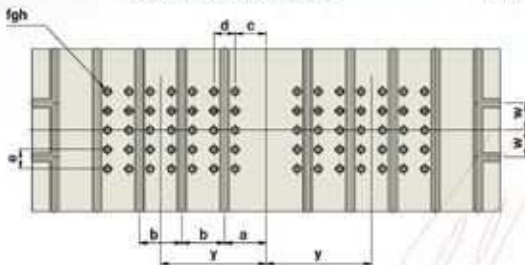
※ Materials and specifications are subject to change without notice.



SURFACE OF SLID E



POWER TAKE-OFF SHAFT



SURFACE OF BOLSTER



SIZE OF T-SLOT

Dimensions of bolster and slide

Model	SN2-110	SN2-160	SN2-200	SN2-250	SN2-300
a	110	200	215	235	235
b	200	200	220	220	220
c	160	150	160	180	180
d	100	100	110	110	110
e	100	100	100	100	100
f(R.L x F.B)	5x4x2	6x4x2	7x5x2	7x5x2	7x5x2
g	ø32	ø32	ø32	ø32	ø32
h	ø40	ø40	ø40	ø40	ø40
i	350	400	450	450	450
j	ø51	ø51	ø51	ø51	ø51
k	120	200	110	120	120
l	240	200	220	240	240
m	28	28	28	28	28
n	30	30	30	30	30
p	20	20	20	20	20
q	48	48	48	48	48
r	100	100	100	120	120
s	90	90	90	110	110
t	20	20	20	20	20
u	7.5	7.5	7.5	7.5	7.5
v	ø70 h7	-0 ø70 h7 -0.03	-0 ø70 h7 -0.03	-0 ø70 h7 -0.03	-0 ø70 h7 -0.03
x	115	125	140	150	150
y	360	400	490	510	510

© Materials and specifications are subject to change without notice.

- ✓ **Match with SEYI automation line, SEYI press provides the most reliable and accurate equipment.**
- ✓ **High productivity press for automating multi-process with large batch small quantity.**
- ✓ **Multi-station safety sensor perfectly protects the tooling and reduces manual failure.**
- ✓ **Multi-feeding system design for customer's great convenience.**



SHIEH YIH MACHINERY INDUSTRY CO., LTD.

NO.446, Nan Shang Rd., Kueisan Hsiang,
Taoyuan, Taiwan

TEL 886-3-352-5466

FAX 886-3-352-5488

XIE YI TECH MACHINERY(CHINA) CO., LTD.

CHINA FACTORY TEL:86-512-5740-7900 FAX:86-512-5740-7899
<http://www.seyi.com.cn>

DONGGUAN BRANCH TEL:86-769-8502-8531 FAX:86-769-8502-8530