

SEYI
EUROPE

CE  ISO 14001 ISO 9001
台灣精品  BSMI  BSMI

SAG-SE2 series

STRAIGHT SIDE DOUBLE CRANK PRESSES
STRAIGHT SIDE CRANKLESS PRESSES



BEST CHOICE

***Leading Your Business
To The Peak***

SAG series

- ▣ **Hydraulic overload protection system**
- ▣ **Extra long 8-point guide plate**
- ▣ **Air counter balance device**
- ▣ **Automatic recirculating lubrication system with distribution monitoring**



SE2 series

- ▣ **Rigid frame design reduces working vibration & noise**
- ▣ **High torque, wet clutch and brake unit with sintered multi-disc linings without abrasion wear problem**
- ▣ **Suitable for long drawing & blanking processing**
- ▣ **Without side pressure, slide move smoothly & accurately**



TOP DESIGN

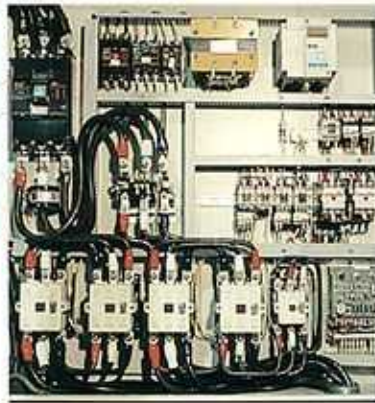
Advancement and Profession Are Our Feature



Operator Friendly Master Control Panel
Display with signs, easy understanding and operation.



Digital Slide Adjustment
Digital slide adjustment readout is recessed in front right side of slide face and indicates the die height in 0.1 mm scale.



Safe And Reliable Electrical Circuit
Multi-checking electrical circuit design to ensure a safe and reliable operation.



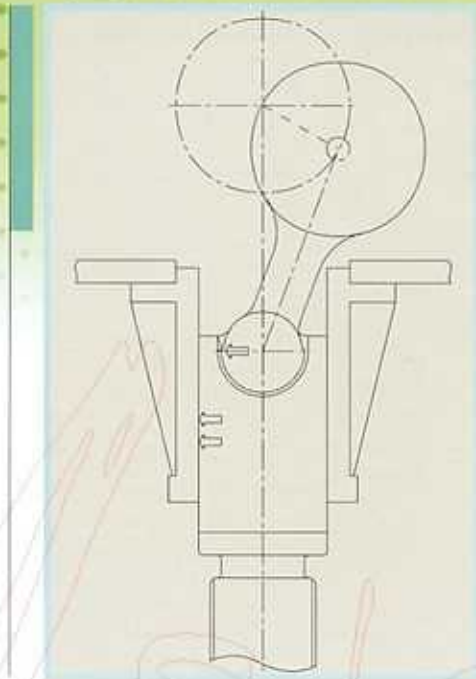
Flywheel Brake And Main Motor FWD/REV Controller(Optional Attachment)
Best design for saving die exchange and installation time.



High Rigidity And Low Noise Design
Less vibration and low noise. Increase tooling life and improve product's accuracy.



Top machining accuracy
With more than 30 years machining skill and experience. Whole plant apply with the top precision machine tools.



Plunger Guide

Hydraulic Overload Protection System

Easy resetting, high sensibility and reliability. Protect the press and tooling from the over loaded damage.

Automatic Recirculating Lubrication With Distributing Monitor

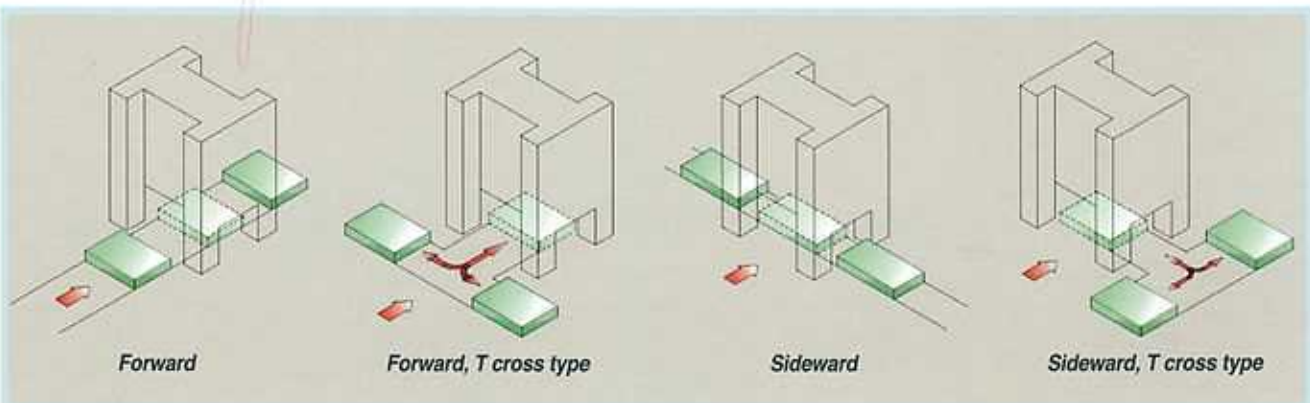
The lubrication system will be controlled and monitored by a progressive lubrication divider block to distribute required oil amounts to all points of press at best condition.

Compatibile With Any Ancillary Equipment

Excellent performance, completely electrical circuit design can be easy to link with any ancillary equipment.

Automatic application

High efficiency automatic feeding robot line can reduce the production cost and improve the competition.



Forward

Forward, T cross type

Sideward

Sideward, T cross type

Moving Bolster (Optional Attachment)

Various moving bolster design, reduce tooling exchange and installation time, increase production efficiency.

Combination with hydraulic clamps and die lifter device can improve more production efficiency.

SAG Specifications

Model	SAG-200		SAG-300		SAG-400			
	S	H	S	H	S	H		
Capacity	200		300		400			
Length of stroke	250	150	300	200	400	250		
Stroke per minute	Fixed speed	25	50					
	Variable speed	25~35	30~60	15~30	25~50	15~26	25~50	
Tonnage rating point	9	6.5	13	6.5	13	6.5		
Die Height	500		600		700			
Adjustment of slide	150		200		250			
Area of slide (L.R x F.B)	mm	1	1300x1000		2200x1200		2500x1400	
		2	1600x1000		2500x1200		2800x1400	
		3	1900x1000		2800x1200		3100x1400	
		4	2200x1000		3100x1200		3400x1400	
Area of bolster (L.R x F.B)	mm	1	1500x1100		2200x1370		2500x1400	
		2	1800x1100		2500x1370		2800x1400	
		3	2100x1100		2800x1370		3100x1400	
		4	2400x1100		3100x1370		3400x1400	
Thickness of bolster	160		190		190			
Window opening (L.R x F.B)	800x400		1000x500		1100x650			
Air Counter Balance Capacity	1800		3000		4000			
Air pressure require	5		5		5			
Floor to bolster height	Fixed bolster	W - plt	850		850		850	
		W/o - plt	1000		-		-	
	Moving bolster	-		-		660		
Main motor	W/o die cushion	Fixed speed	25HPx4P					
		Variable speed	25HPx4P		50HPx4P		60HPx4P	
	W/ die cushion	Variable speed	25HPx4P		50HPx4P		75HPx4P	
Die Cushion	Type	Bellow		Cylinder		Cylinder		
	Capacity	28		55		60		
	Length of stroke	130		150		200		
	Adjustment	-		-		200		
Area of cushion pad (L.RxF.B)	mm	1	1100x700		1700x900		2000x900	
		2	1400x700		2000x900		2300x900	
		3	1700x700		2300x900		2600x900	
		4	2000x700		2600x900		2900x900	

SE2 Specifications

Model	SE2-400		SE2-500		SE2-600		SE2-800		SE2-1000			
	S	H	S	H	S	H						
Capacity	400		500		600		800		1000			
Length of stroke	500		500		500		600		600			
Stroke per minute	Fixed speed	22		20		20		18		18		
	Variable speed	15~26		12~24		12~22		10~18		10~18		
Tonnage rating point	13	6.5	13	6.5	13	6.5	13		13			
Die height	700		800		800		1000		1000			
Adjustment of slide	300		400		400		400		400			
Area of slide (L.R x F.B)	mm	1	2500x1400		2500x1550		2500x1500		2800x1700		2800x1700	
		2	2800x1400		2800x1550		2800x1550		3100x1700		3100x1700	
		3	3100x1400		3100x1550		3100x1550		3400x1700		3400x1700	
		4	3400x1400		3400x1550		3400x1550		3700x1700		3700x1700	
Area of bolster (L.R x F.B)	mm	1	2500x1400		2500x1550		2500x1500		2800x1700		2800x1700	
		2	2800x1400		2800x1550		2800x1550		3100x1700		3100x1700	
		3	3100x1400		3100x1550		3100x1550		3400x1700		3400x1700	
		4	3400x1400		3400x1550		3400x1550		3700x1700		3700x1700	
Floor to bolster height (W / pit)	Fixed bolster	850		850		850		850		850		
	Moving bolster	660		660		660		660		660		
Die cushion	Type	Cylinder		Cylinder		Cylinder		Cylinder		Cylinder		
	Capacity	60		80		100		120		160		

SAG-500		SAG-600		SAG-800		SAG-1000	
S	H	S	H	S	H	S	H
500		600		800		1000	
450	250	450	250	450	300	450	300
12~22	25~50	12~22	25~50	10~20	20~40	10~20	20~40
13	6.5	13	6.5	13	6.5	13	6.5
700		700		800		800	
250		250		300		300	
—	2500x1500	—	2500x1500	—	3100x1550	—	3100x1550
2800x1550		2800x1550		3400x1550		3400x1550	
3100x1550		3100x1550		3700x1550		3700x1550	
3400x1400		3400x1550		4000x1550		4000x1550	
2500x1550		2500x1550		—	3100x1550	—	3100x1550
2800x1550		2800x1550		3400x1550		3400x1550	
3100x1550		3100x1550		3700x1550		3700x1550	
3400x1550		3400x1550		4000x1550		4000x1550	
190		250		250		250	
1200x650		1300x650		1300x650		1300x650	
4500		5000		5500		6000	
5		5		5		5	
850		850		850		850	
—		—		—		—	
660		660		660		660	
75HPx4P		100HPx4P		100HPx4P		125HPx4P	
100HPx4P		125HPx4P		125HPx4P		150HPx4P	
Cylinder		Cylinder		Cylinder		Cylinder	
80		80		100		100	
220		220		220		220	
220		220		220		220	
—		—		—		—	
2300x950		2300x950		2800x950		2800x950	
2600x950		2600x950		3100x950		3100x950	
2900x950		2900x950		3400x950		3400x950	





SAG series

General Attachment

1. Air Counter Balancer System
2. Hydraulic Overload Protection System
3. Motorized Slide Adjustment
4. Programmable Cam Switches
5. Product Counter
6. Batch Counter
7. Misfeed Detector Plug
8. Air Outlet
9. Air Ejector
10. Electrical Light Socket
11. Automatic Recirculation Lubrication System
12. Control Console
13. Combination Clutch & Brake
14. Dual Check Safety Electrical Circuit
15. Large Lockable Emergency Stop Button
16. Die Light Device
17. Safety Fence
18. Ladder
19. Operating Pedestal (T-Stand)
20. Tools Box

Optional Attachment

1. Power Take-off Shaft
2. Die Cushion
3. Die Cushion Stroke Adjustment Device
4. Die Cushion Locking Device
5. Die Cushion Air Quick Release Device
6. Photoelectric Safety Device
7. Variable Speed Motor (Inverter)
8. Flywheel Brake and Main Motor FWD/REV Controller
9. Quick Die Change System
10. Moving Bolster
11. Knockout Device
12. Tonnage Indicator
13. Pneumatic System Application
14. Anti Vibration Mounts
15. Safety Die Block

SE2 series

General Attachment

1. Air Counter Balancer System
2. Hydraulic Overload Protection System
3. Motorized Slide Adjustment
4. Programmable Cam Switches
5. Product Counter
6. Batch Counter
7. Misfeed Sockets
8. Air Outlet
9. Air Ejector
10. Electrical Light Socket
11. Automatic Recirculation (Lubrication System)
12. Flywheel Brake and Main Motor FWD/REV Controller
13. Dual Check Safety Electrical Circuit
14. Large Lockable Emergency Stop Button
15. Die Light Device
16. Safety Fence
17. Ladder
18. Operating Pedestal (T-Stand)
19. Tools Box

Optional Attachment

1. Power Take-off Shaft
2. Die Cushion
3. Die Cushion Stroke Adjustment Device
4. Die Cushion Locking Device
5. Die Cushion Air Quick Release Device
6. Photoelectric Safety Device
7. Variable Speed Motor (Inverter)
8. Quick Die Change System
9. Moving Bolster
10. Knockout Device
11. Tonnage Indicator
12. Pneumatic System Application
13. Anti Vibration Mounts
14. Safety Die Block



SHIEH YIH MACHINERY INDUSTRY CO., LTD.

No. 446 Nan Shang Rd., Kueisan Hsiang,
Taoyuan, Taiwan
TEL : (03)3525466 FAX : (03)3525488
<http://www.seyi.com.tw>
E-mail : seyi@seyi.com.tw