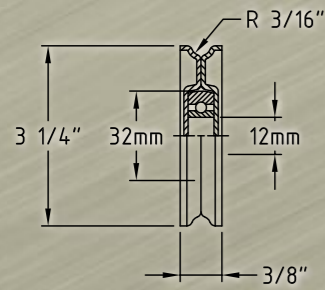
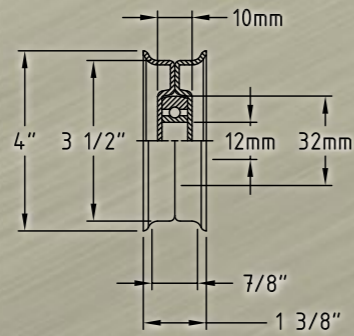


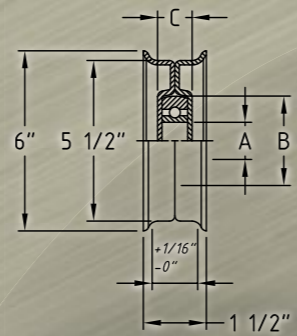
Transmission Pulleys



3/4" Rope Pulley (3/8)



3 1/2" Flat Pulley



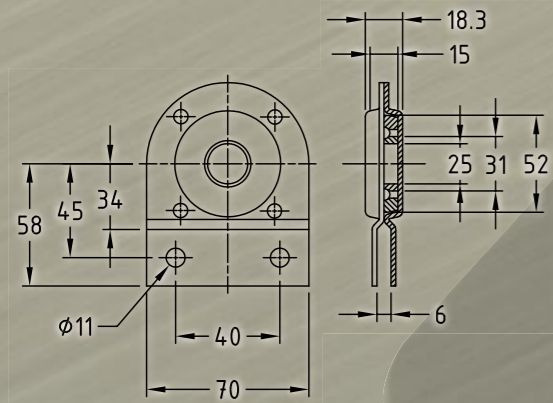
5 1/2" Flat Pulley



Metal Form Group

BALMIC Pressed Metal Bearing Housings

Hanger Brackets



O40 - Hanger Bracket Housing

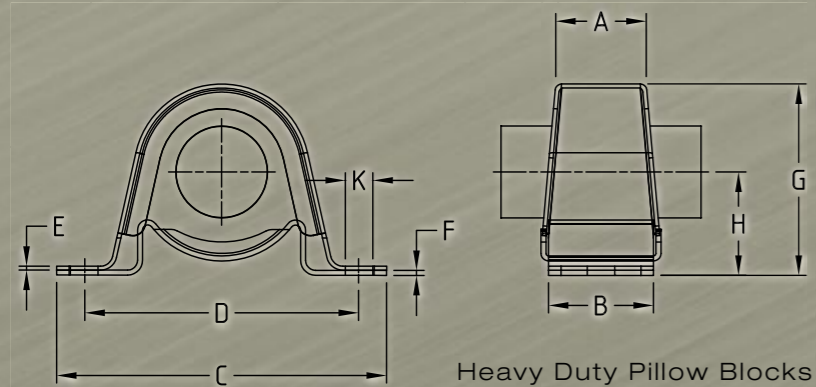
Star Washer



O40 - W11 Star Washer



Metal Stamped Pillow Blocks



Heavy Duty Pillow Blocks



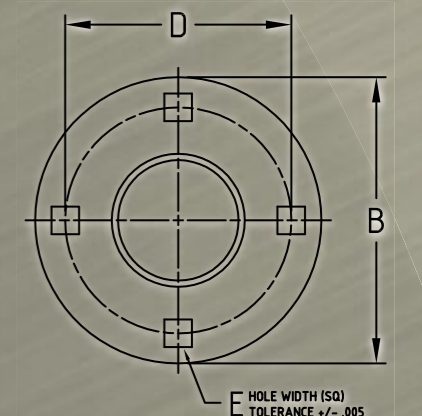
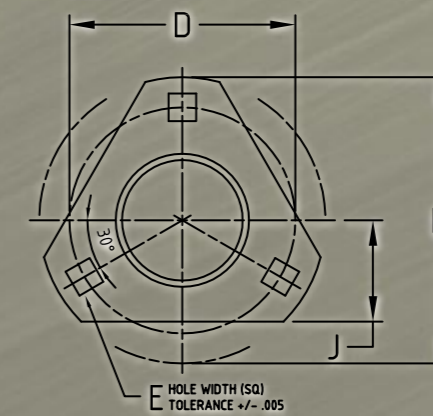
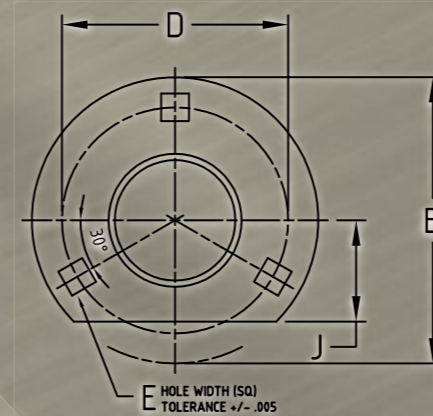
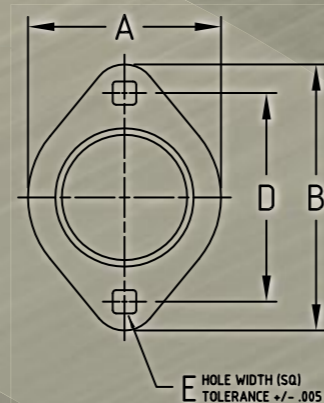
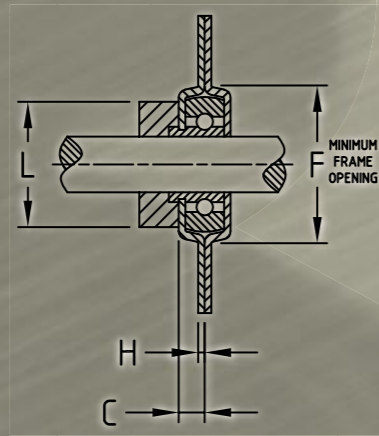
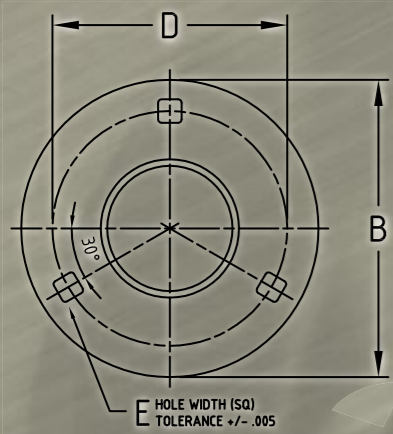
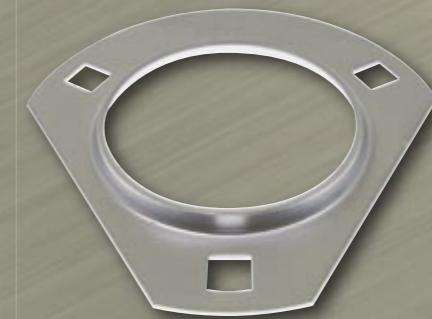
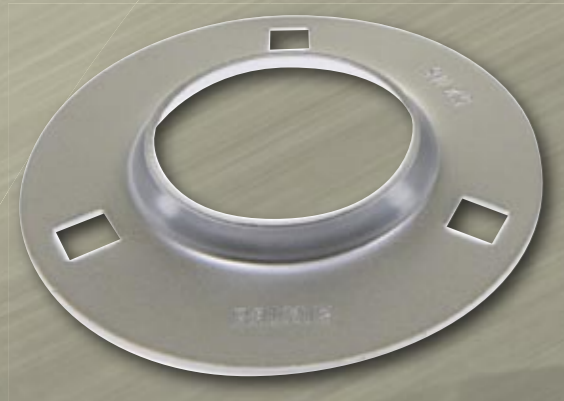
CODE	SHAFT SIZES - INCHES	MM	A	B	C	D	E	F	G	H	K
Series PB											
O30-40 PB	1/2 - 5/8	17	19	25	86	68.3	1.6	1.6	43.6	22.2	9
O30-47 PB	3/4	20	22	32	98	76.2	1.6	1.6	50.8	25.4	9
O30-52 PB	7/8, 15/17, 1	25	22	32	108	86.3	2	2	55.6	28.6	11
O30-62 PB	1 1/16, 1 1/8, 1 3/16, 1 1/4	30	26	38	118	96	2	2	66.7	33.3	11
O30-72 PB	1 1/4, 1 3/8, 1 7/16	35	29	42	132	105.7	1.6	2	76.5	39.7	11

Balmic Metal Form Pty Ltd ABN 59 004 916 714 - BMH Metal Form Pty Ltd ABN 71 007 393 311

1 Griffith Street, Knoxfield Victoria 3180 T: 61 3 9763 8000 F: 61 3 9763 2335 info@metalform.com.au www.metalform.com.au

Proudly Australian Made

BALMIC Pressed Metal Bearing Housings



MS Series

MST Series

MS-1C Series

MS-3C Series

MS-4H Series

CODE	SHAFT SIZES - INCHES	MM	A	B	C	D	E	F	H	
000-40 MS	1/2 - 5/8	17		81	7.9	63.5	7.13	49.2	2	3 Holes
000-47 MS	3/4	20		90.5	7.9	71.44	8.74	55.6	2	3 Holes
000-52 MS	7/8, 15/16, 1	25		95.25	10	76.2	8.74	60.3	2	3 Holes
000-62 MS	1 1/16, 1 1/8, 1 3/16, 1 1/4	30		112.7	10	90.5	10.31	68.3	2.5	3 Holes
000-72 MS	1 1/4, 1 3/8, 1 7/16	35		122.2	10	100	10.31	81	2.5	3 Holes
000-80 MS	1 1/2	40		147.6	11	119	13.5	90.5	3	4 Holes
000-85 MS	1 3/4	45		149.2	11	120.65	13.5	96.8	3	4 Holes
000-87 MS	2	50		146	16.8	120.65	14.75x 13.49	99	3	4 Holes
000-100 MS	2 (SQ)	50		166.7	13	138.1	13.5	112.7	4	4 Holes
004-40 MST	1/2 - 5/8	17	58.74	81	7.9	63.5	7.13	49.2	2	2 Holes
004-47 MST	3/4	20	66.68	90.5	7.9	71.44	8.74	55.6	2	2 Holes
004-52 MST	7/8, 15/16, 1	25	71	95.25	10	76.2	8.74	60.3	2	2 Holes
004-62 MST	1 1/16, 1 1/8, 1 3/16, 1 1/4	30	84.14	112.7	10	90.5	10.31	68.3	2.5	2 Holes
004-72 MST	1 1/4, 1 3/8, 1 7/16	35	93.66	125.4	10	100	10.31	81	2.5	2 Holes

* Zinc plated flanges available upon request
 * Some sizes available in stainless steel upon request

CODE	SHAFT SIZES - INCHES	MM	B	C	D	E	F	H	J
002-47 MS-1C	3/4	20	90.5	7.9	71.44	8.74	55.6	2	32.0
002-52 MS-1C	7/8, 15/16, 1	25	95.25	10	76.2	8.74	60.3	2	34
002-62 MS-1C	1 1/16, 1 1/8, 1 3/16, 1 1/4	30	112.7	10	90.5	10.31	68.3	2.5	45
002-72 MS-1C	1 1/4, 1 3/8, 1 7/16	35	122.2	10	100	10.31	81	2.5	45
002-47 MS-3C	3/4	20	90.5	7.9	71.44	8.74	55.6	2	32
002-52 MS-3C	7/8, 15/16, 1	25	95.25	10	76.2	8.74	60.3	2	34
002-62 MS-3C	1 1/16, 1 1/8, 1 3/16, 1 1/4	30	112.7	10	90.5	10.31	68.3	2.5	45
002-72 MS-3C	1 1/4, 1 3/8, 1 7/16	35	122.2	10	100	10.31	81	2.5	45
000-47 MS-4H	3/4	20	90.5	7.9	71.44	8.74	55.6	2	4 Holes

Greasable Flanges

003-52 MS-GN	7/8, 15/16, 1	25	95.25	10	76.2	8.74	60.3	2	
003-62 MS-GN	1 1/16, 1 1/8, 1 3/16, 1 1/4	30	112.7	10	90.5	10.31	68.3	2.5	
003-72 MS-GN	1 1/4, 1 3/8, 1 7/16	35	122.2	10	100	10.31	81	2.5	
003-80 MS-GN	1 1/2	40	147.6	11	13.5	13.5	90.5	3	

*Zinc plated flanges available upon request
 *Some sizes available in stainless steel upon request